

# AROMA®

## Electric Mandoline Slicer

### Instruction Manual



[www.AromaCo.com](http://www.AromaCo.com)

AMN-100

Congratulations on your purchase of the **AROMA** Electric Mandoline Slicer!

The Electric Mandoline Slicer will drastically reduce kitchen prep time, giving you more time to spend with your family. Let the Electric Mandoline Slicer do all the work, at the touch of button, professionally slicing, julienning or grating as your hands stay comfortably away from the blade. In just seconds your food will be prepped and ready for a wide variety of dishes; including:

- Garden-Fresh Salads
- Fruit Salads
- Nachos
- Fajitas
- Stir-Frys
- Coleslaw
- ...and more!

For recipe suggestions or more kitchen solution ideas, please visit us online at [www.AromaCo.com](http://www.AromaCo.com).

Please read all the instructions before first use.

Published By:

Aroma Housewares Co.  
6469 Flanders Drive  
San Diego, CA 92121  
U.S.A.  
1-800-276-6286  
[www.aromaco.com](http://www.aromaco.com)

© 2008 Aroma Housewares Company All rights reserved.

# IMPORTANT SAFEGUARDS

*Basic safety precautions should always be followed when using electrical appliances, including the following:*

1. Important: Read all instructions carefully before first use.
2. Blades and inserts are extremely sharp, handle with care.
3. Use only on a level, dry surface.
4. To protect against electrical shock, do not immerse cord, plug or the motor housing in water or any other liquid.
5. Close supervision is necessary when the appliance is used near children.
6. Do not operate any appliance with a damaged cord or plug or after the appliance malfunctions or has been damaged in any manner. Contact Aroma customer service for examination, repair or adjustment.
7. The use of accessory attachments not recommended by Aroma may result in fire, electrical shock or injury.
8. Do not use outdoors.
9. Do not let cord touch hot surfaces or hang over the edge of a counter or table.
10. Avoid contact with moving parts.
11. Do not use this appliance for other than its intended use.
12. Unplug this product from the outlet when not in use, before putting on or removing blades or inserts and before cleaning.
13. Do not press the power switch with any foreign object.
14. Use only with a 120V AC power outlet.
15. Always unplug from the base of the wall outlet. Never pull on the cord.
16. Never insert food by hand. Always use the food pusher.
17. Do not bend, twist or bundle the power cord. Do not place heavy objects on the power cord. Doing so may cause damage.
18. Unplug the slicer from the power outlet before removing sliced food from the collection tray.
19. To turn off this appliance, remove plug from the wall outlet.
20. Never reach hands or fingers into the food chute.
21. Disconnect the switch ring from the power switch when inserting or removing vegetables.
22. Do not insert foreign objects into the food chute.
23. Do not use benzene, alcohol or polishing powder to wash this product.
24. Keep hands and utensils out of the container while slicing to reduce the risk of severe injury or damage to the product.
25. Do not remove the food pusher during operation.
26. Do not move unit while in operation. Doing so may result in injury.
27. When removing processed food, be sure the unit is turned off and unplugged. Hold the base with one hand and slowly slide out the collection tray to remove food.

## SAVE THESE INSTRUCTIONS

## SHORT CORD INSTRUCTIONS

1. A short power-supply cord is provided to reduce the risks resulting from becoming entangled in or tripping over a longer cord.
2. Longer extension cords are available and may be used if care is exercised in their use.
3. If a longer extension cord is used:
  - a. The marked electrical rating of the extension cord should be at least as great as the electrical rating of the appliance.
  - b. The longer cord should be arranged so that it will not drape over the countertop or tabletop where it can be pulled by children or tripped over unintentionally.



## POLARIZED PLUG

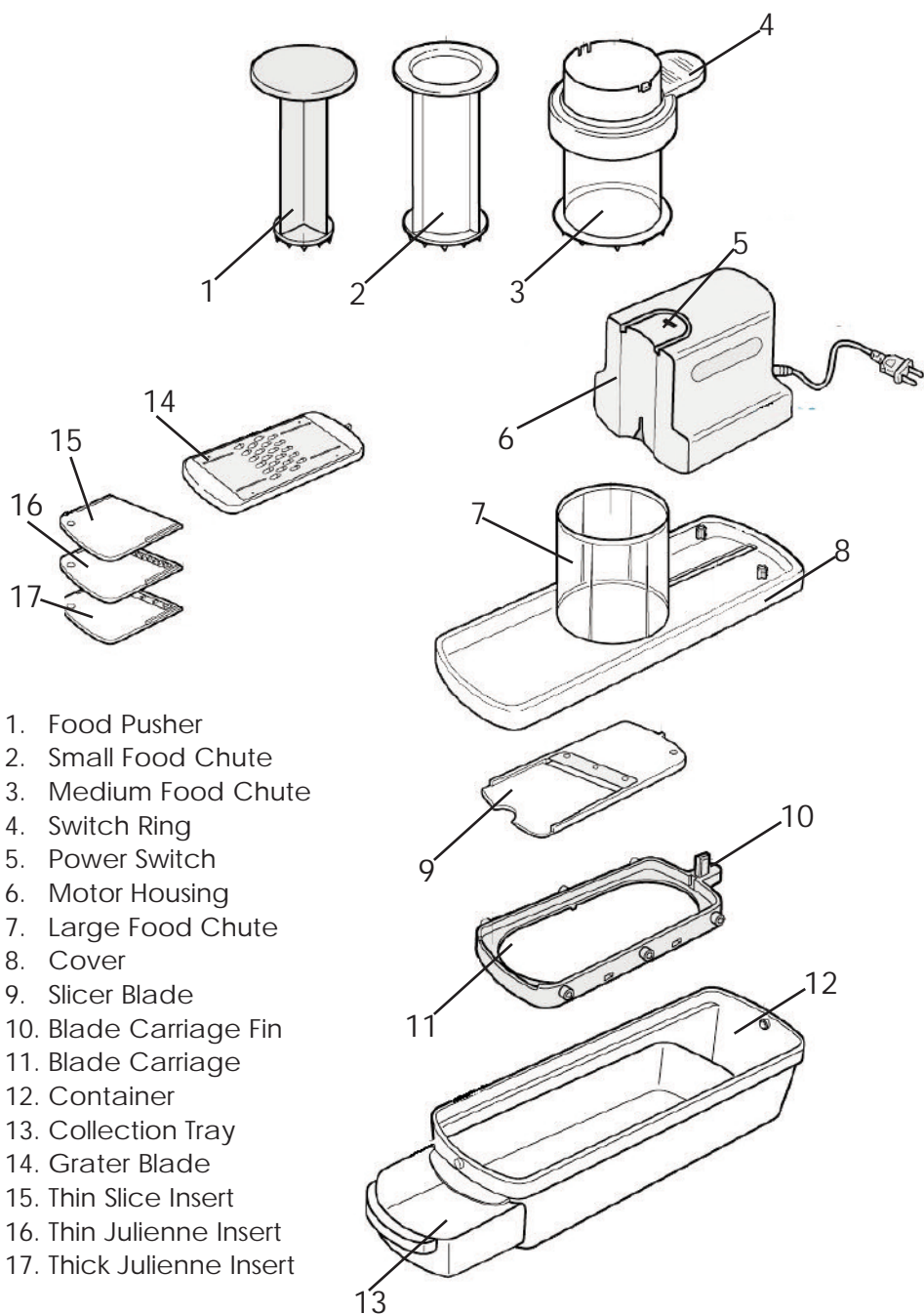
This appliance has a polarized plug (one blade is wider than the other); follow the instructions below:

To reduce the risk of electric shock, this plug is intended to fit into a polarized outlet only one way. If the plug does not fit fully into the outlet, reverse the plug. If it still does not fit, contact a qualified electrician. Do not attempt to modify the plug in any way.

If the supply cord is damaged, it must be replaced by the manufacturer, its service agent or a similarly qualified person in order to avoid a hazard.

This appliance is for household use only.

# PARTS IDENTIFICATION



# USING YOUR ELECTRIC MANDOLINE SLICER

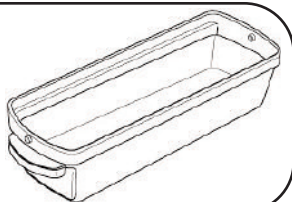
## Before First Use:

1. Read all instructions and important safeguards.
  2. Remove all packaging materials, making sure items are received in good condition.
  3. Tear up all plastic bags as they can pose a risk to children.
  4. Wash collection cup, container, blade carriage, cover and all food chutes, blades and blade inserts in warm, soapy water. Rinse and dry thoroughly.
- Do not immerse the motor housing, cord or plug in water at any time.

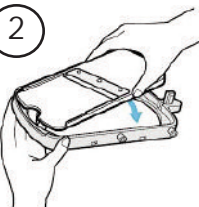
## To Assemble the Electric Mandoline Slicer:

1

Slide the collection tray into the container.



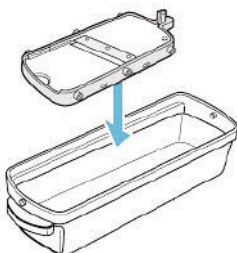
2



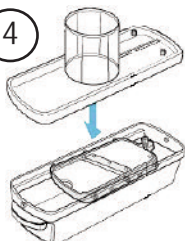
Place the blade to be used on to the blade carriage. Be sure the hole on the blade lines up correctly with the peg on the blade carriage.

3

Place the blade carriage, with the blade in place, onto the container, with the blade carriage fin pointing upward.



4



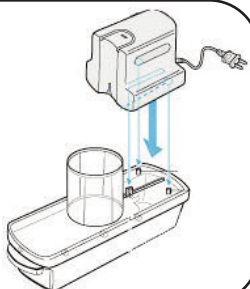
Place the cover onto the container. Position the cover so that the groove to the rear of the food chute attaches to the blade carriage fin.

# USING YOUR ELECTRIC MANDOLINE SLICER

## To Assemble the Electric Mandoline Slicer (Cont.):

5

Place the motor housing onto the cover. To connect properly, the slots on the motor housing should lock into the pegs on the cover.



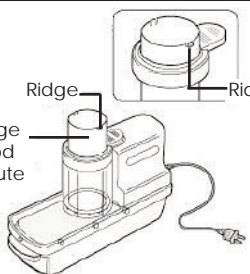
6

Large Food Chute

Ridge

Ridge

Insert the large food chute into the large food chute. Be sure the dual ridges on the large food chute are at the top.

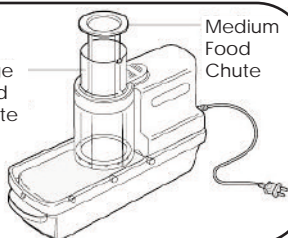


7

Insert the medium food chute into the large food chute.

Large Food Chute

Medium Food Chute



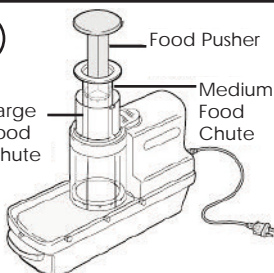
8

Food Pusher

Large Food Chute

Medium Food Chute

Insert the food pusher into the medium food chute.



# USING YOUR ELECTRIC MANDOLINE SLICER

## Choosing the Correct Food Chute:

The proper size food chute depends upon the food being used. Here is a general guide.

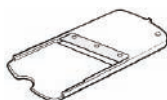
Food Chute	Minimum Food Size (Diameter)	Maximum Food Size (Diameter)
Large Food Chute	2¼ inches	3 inches
Medium Food Chute	1½ inches	2¼ inches
Small Food Chute	N/A	1½ inches

### **NOTE:**

- It may be necessary to cut larger foods to fit properly into the provided food chutes.
- If food being used is too large, it will affect results and possibly cause the Electric Mandoline Slicer to malfunction.
- For best results, be sure food is evenly distributed near the blade.

## To Slice (Thick):

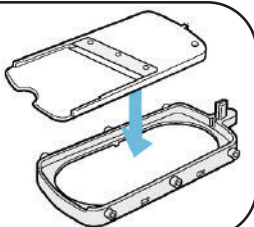
### Blade/Insert Needed



Slicer Blade

1

Place the slicer blade onto the blade carriage.



### **CAUTION:**

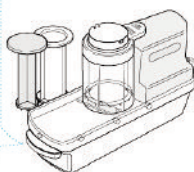
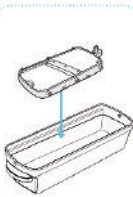
Only one blade may be used at a time. Do not attempt to stack the grater blade on top of the slicer blade. This may cause the product to fail or lead to injury.



# USING YOUR ELECTRIC MANDOLINE SLICER

## To Slice (Thick):

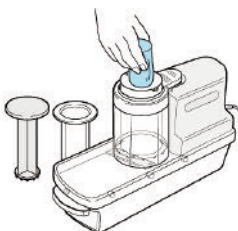
2



Place the blade carriage into the container. Attach the motor housing onto the cover.

3

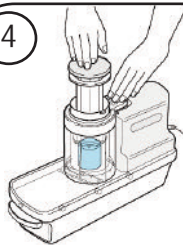
Insert food to be sliced into the food chute. Refer to "*Choosing the Correct Food Chute*" on page 6 to determine which food chute should be used.



### **NOTE:**

- For best results, be sure food is evenly distributed near the blade.
- Stack food tightly into the food chute when possible, as this will not only produce more sliced food, but will also result in more consistent slices.

4



Plug the power cord into the proper wall outlet. Press the food down gently with the food pusher.

5

Press the switch ring down into the power switch to begin slicing.



# USING YOUR ELECTRIC MANDOLINE SLICER

## To Slice (Thick):



As food slices, gently press it downward with the food pusher until it cannot be sliced any more. Release the power switch.

7

Unplug the unit from the wall outlet. Pull the collection tray out of the container to remove sliced food.

### **NOTE:**

The Electric Mandoline Slicer is not intended to slice the following foods:

- Hard, elastic foods
- Frozen foods
- Meat, including sausage and ham
- Fish
- Hollow, soft vegetables, such as scallions
- Soft vegetables, such as tomatoes

If any of these foods are used, the Electric Mandoline Slicer will not produce desired results and may damage the blade or cause the unit to malfunction.

# USING YOUR ELECTRIC MANDOLINE SLICER

## To Slice (Thin):

### Blade/Insert Needed



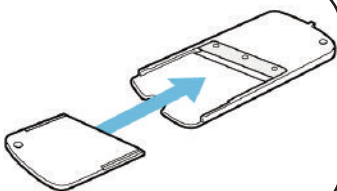
Slicer Blade



Thin Slice Insert

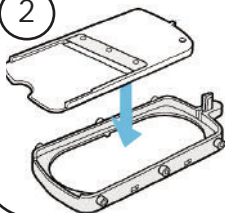
1

Slide the thin slice insert into the slicer blade.



2

Place the slicer blade, with insert, onto the blade carriage.

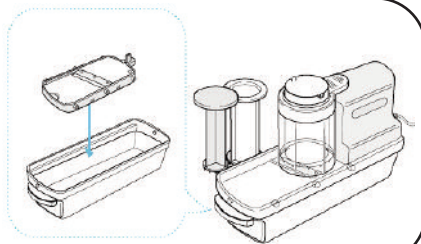


### **CAUTION:**

Only one blade may be used at a time. Do not attempt to stack the grater blade on top of the slicer blade. This may cause the product to fail or lead to injury.

3

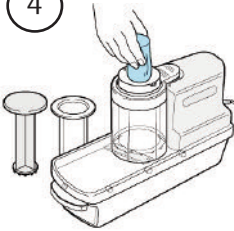
Place the blade carriage into the container. Attach the motor housing onto the cover.



# USING YOUR ELECTRIC MANDOLINE SLICER

## To Slice (Thin):

4



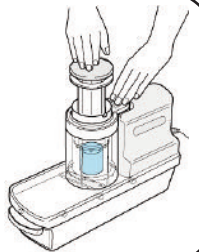
Insert food to be sliced into the food chute. Refer to "*Choosing the Correct Food Chute*" on page 6 to determine which food chute should be used.

### ! NOTE:

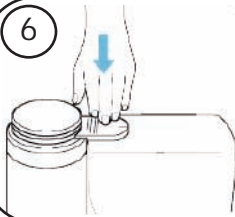
- For best results, be sure food is evenly distributed near the blade.
- Stack food tightly into the food chute when possible, as this will not only produce more sliced food, but will also result in more consistent slices.

5

Plug the power cord into the proper wall outlet. Press the food down gently with the food pusher.



6



Press the switch ring down into the power switch to begin slicing.

# USING YOUR ELECTRIC MANDOLINE SLICER

## To Slice (Thin):



As food slices, gently press it downward with the food pusher until it cannot be sliced any more. Release the power switch.

7

Unplug the unit from the wall outlet. Pull the collection tray out of the container to remove sliced food.

### **NOTE:**

The Electric Mandoline Slicer is not intended to slice the following foods:

- Hard, elastic foods
- Frozen foods
- Meat, including sausage and ham
- Fish
- Hollow, soft vegetables, such as scallions
- Soft vegetables, such as tomatoes

If any of these foods are used, the Electric Mandoline Slicer will not produce desired results and may damage the blade or cause the unit to malfunction.

# USING YOUR ELECTRIC MANDOLINE SLICER

## To Julienne (Thick):

### Blade/Inserts Needed



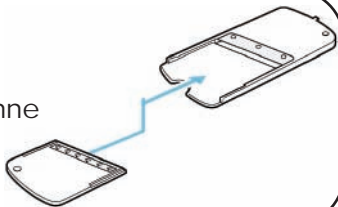
Slicer Blade



Thick Julienne Insert

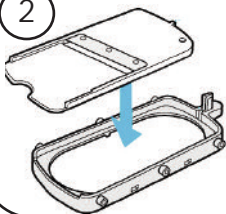
1

Slide the thick julienne insert into the slicer blade.



2

Place the slicer blade, with insert, onto the blade carriage.

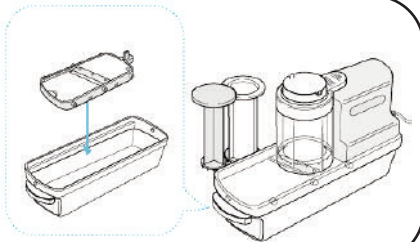


### **CAUTION:**

Only one blade may be used at a time. Do not attempt to stack the grater blade on top of the slicer blade. This may cause the product to fail or lead to injury.

3

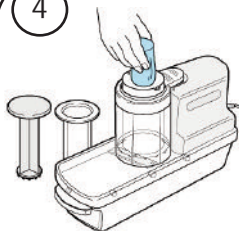
Place the blade carriage into the container. Attach the motor housing onto the cover.



# USING YOUR ELECTRIC MANDOLINE SLICER

## To Julienne (Thick):

4



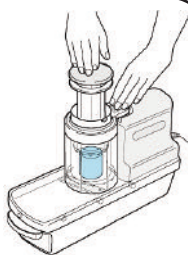
Insert food to be sliced into the food chute. Refer to "*Choosing the Correct Food Chute*" on page 6 to determine which food chute should be used.

### **! NOTE:**

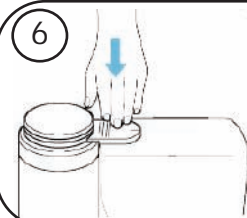
- For best results, be sure food is evenly distributed near the blade.
- Stack food tightly into the food chute when possible, as this will not only produce more sliced food, but will also result in more consistent slices.
- Place food in the food chute so that the direction of the slicer blade is going with the fiber.

5

Plug the power cord into the proper wall outlet. Press the food down gently with the food pusher.



6



Press the switch ring down into the power switch to begin slicing.

# USING YOUR ELECTRIC MANDOLINE SLICER

## To Julienne (Thick):

7

As food slices, gently press it downward with the food pusher until it cannot be sliced any more. Release the power switch.



8

Unplug the unit from the wall outlet. Pull the collection tray out of the container to remove sliced food.

### **NOTE:**

The Electric Mandoline Slicer is not intended to julienne the following foods:

- Hard, elastic foods
- Frozen foods
- Meat, including sausage and ham
- Fish
- Hollow, soft vegetables, such as scallions
- Soft vegetables, such as tomatoes

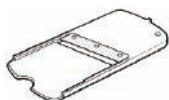
If any of these foods are used, the Electric Mandoline Slicer will not produce desired results and may damage the blade or cause the unit to malfunction.



# USING YOUR ELECTRIC MANDOLINE SLICER

## To Julienne (Thin):

### Blade/Insert Needed



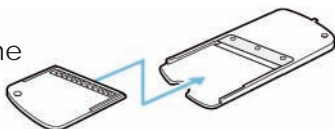
Slicer Blade



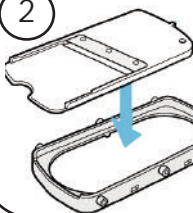
Thin Julienne Insert

1

Slide the thin julienne insert into the slicer blade.



2



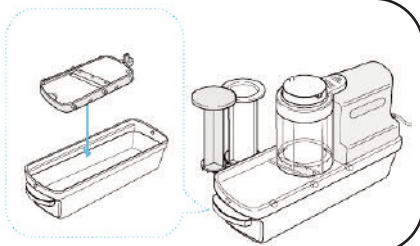
Place the slicer blade, with insert, onto the blade carriage.

### CAUTION:

Only one blade may be used at a time. Do not attempt to stack the grater blade on top of the slicer blade. This may cause the product to fail or lead to injury.

3

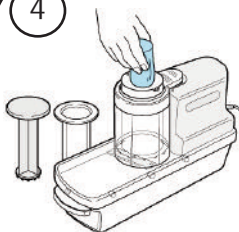
Place the blade carriage into the container. Attach the motor housing onto the cover.



# USING YOUR ELECTRIC MANDOLINE SLICER

## To Julienne (Thin):

4



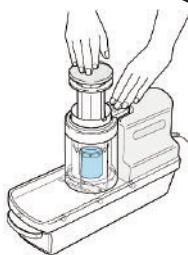
Insert food to be sliced into the food chute. Refer to "*Choosing the Correct Food Chute*" on page 6 to determine which food chute should be used.

### ⚠ NOTE:

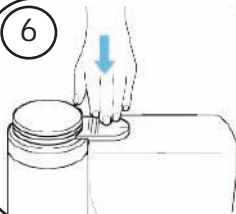
- For best results, be sure food is evenly distributed near the blade.
- Stack food tightly into the food chute when possible, as this will not only produce more sliced food, but will also result in more consistent slices.
- Place food in the food chute so that the direction of the slicer blade is going with the fiber.

5

Plug the power cord into the proper wall outlet. Press the food down gently with the food pusher.



6



Press the switch ring down into the power switch to begin slicing.

# USING YOUR ELECTRIC MANDOLINE SLICER

## To Julienne (Thin):

7

As food slices, gently press it downward with the food pusher until it cannot be sliced any more. Release the power switch.



8

Unplug the unit from the wall outlet. Pull the collection tray out of the container to remove sliced food.

### **NOTE:**

The Electric Mandoline Slicer is not intended to julienne the following foods:

- Hard, elastic foods
- Frozen foods
- Meat, including sausage and ham
- Fish
- Hollow, soft vegetables, such as scallions
- Soft vegetables, such as tomatoes

If any of these foods are used, the Electric Mandoline Slicer will not produce desired results and may damage the blade or cause the unit to malfunction.

# USING YOUR ELECTRIC MANDOLINE SLICER

## To Grate:

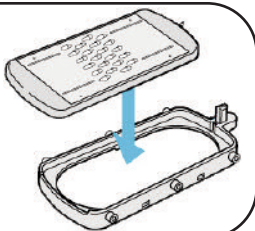
### Blade/Inserts Needed



Grater Blade

1

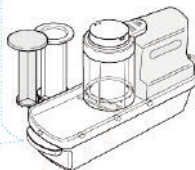
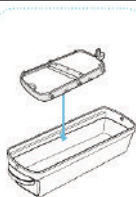
Place the grater blade onto the blade carriage.



### **! CAUTION:**

Only one blade may be used at a time. Do not attempt to stack the slicer blade on top of the grater blade. This may cause the product to fail or lead to injury.

2



Place the blade carriage into the container. Attach the motor housing onto the cover.

# USING YOUR ELECTRIC MANDOLINE SLICER

## To Grate:

3

Insert food to be grated into the food chute. Refer to *"Choosing the Correct Food Chute"* on page 6 to determine which food chute should be used.

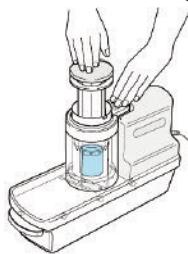


### ! NOTE:

- For best results, be sure food is evenly distributed near the blade.
- Stack food tightly into the food chute when possible, as this will not only produce more sliced food, but will also result in more consistent cuts.
- This grater works best with harder cheeses, such as cheddar or Parmesan. Soft cheeses will not produce the same results.

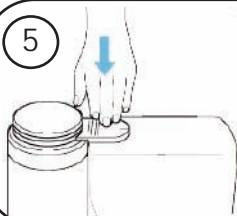
4

Plug the power cord into the proper wall outlet. Press the food down gently with the food pusher.



5

Press the switch ring down into the power switch to begin grating.



# USING YOUR ELECTRIC MANDOLINE SLICER

## To Grate:

6

As food grates, gently press it downward with the food pusher until it cannot be grated any more. Release the power switch.



7

Unplug the unit from the wall outlet. Pull the collection tray out of the container to remove grated food.

### **NOTE:**

The Electric Mandoline Slicer is not intended to grate the following foods:

- Hard, elastic foods
- Frozen foods
- Meat, including sausage and ham
- Fish
- Hollow, soft vegetables, such as scallions
- Soft vegetables, such as tomatoes

If any of these foods are used, the Electric Mandoline Slicer will not produce desired results and may damage the blade or cause the unit to malfunction.

# TO CLEAN

Unplug the Electric Mandoline Slicer prior to cleaning or removing parts.

Clean the motor housing, blades, inserts, food pusher, cover, container and food chute after each use.

## Helpful Hint

For quick and easy cleanup, all parts, except the motor housing, are safe to wash in the dishwasher's top rack.

- The motor housing is NOT dishwasher-safe.

## To Clean Motor Housing:

1. Wipe the motor housing with a damp cloth.
2. Dry with a soft cloth.
- Do not use harsh cleaners on the motor housing as they may lead to discoloration or malfunction.
- Do not immerse the motor housing in water.

## To Clean Blades and Inserts:

1. Wash all used blades and/or inserts with warm, soapy water.
2. Dry thoroughly with a soft cloth before storing.

## Helpful Hint

Prior to using blades or inserts, apply a little cooking oil to prevent staining.

## To Clean Food Pusher and Food Chutes:

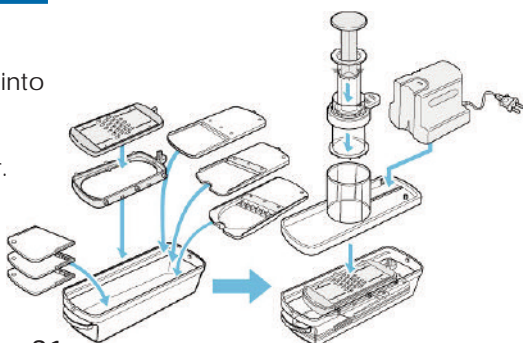
1. Wash food pusher and food chutes in warm, soapy water.
2. Dry thoroughly with a soft cloth before storing.

## To Clean Cover and Container:

1. Wash cover and container in warm, soapy water.
2. Dry thoroughly with a soft cloth before storing.
- Do not use harsh cleaners on the cover or container as they may scratch, discolor or crack the product.

## To Store:

1. Slide the collection tray into the container.
2. Place the slicer blade and inserts into the container.
3. Place the grater blade onto the blade carriage into the container.
4. Place the cover and motor housing, food chutes and food pusher in place on top of the container.



# TROUBLESHOOTING

Problem	Possible Cause	Solution
Unit does not turn on.	The power switch and switch dent are not properly connected.	Place the switch ring over the power switch. Refer to " <i>Parts Identification</i> " on page 3 for proper placement.
	A foreign object is lodged in the power switch.	Remove the object.
	Movement has stopped due to blockage of the blade or an overload of food.	Disconnect the power plug. Remove blade and clear excess food.
Blade does not move during operation.	A foreign object is lodged between the blade carriage and the container.	Remove the foreign object.
	The container is overloaded with processed food.	Slide collection cup out of the container and remove processed food. Replace collection cup and resume operation.
The motor housing is vibrating excessively.	The unit is being used on an uneven surface.	Use only on a level, dry surface.



## **NOTE:**

If blades or inserts are damaged or deformed, or if performance becomes noticeably poorer, contact an Aroma customer service representative for replacement or repair.



# LIMITED WARRANTY

Aroma Housewares Company warrants this product free from defects in material and workmanship for one year from provable date of purchase in the continental United States.

Within this warranty period, Aroma Housewares Company will repair or replace, at its option, defective parts at no charge, provided the product is returned, freight prepaid with proof of purchase and U.S. \$9.00 for shipping and handling charges payable to Aroma Housewares Company. Before returning an item, please call the toll free number below for a return authorization number. Allow 2-4 weeks for return shipping.

This warranty does not cover improper installation, misuse, abuse or neglect on the part of the owner. Warranty is also invalid in any case that the product is taken apart or serviced by an unauthorized service station.

This warranty gives you specific legal rights, which may vary from state to state, and does not cover areas outside the United States.

AROMA HOUSEWARES COMPANY  
6469 Flanders Drive  
San Diego, California 92121  
1-800-276-6286  
M-F, 8:30 AM - 5:00 PM, Pacific Time  
Website: [www.aromaco.com](http://www.aromaco.com)