

AROMA®



instruction manual

AWK-267SB

Electric Kettle
(Stainless Steel)

Questions or concerns about your Aroma product?

www.AromaCo.com/Support

1-800-276-6286

**DISCOVER
more of our
products!**



Multicookers/
Rice Cookers



Pressure Cookers



Water Kettles



Indoor Grills



Induction Cooktops

AROMA®

To Enhance and Enrich Lives.

Here at Aroma we strive to make a difference—to design and distribute products that enhance and enrich people's lives.

Aroma offers an array of exceptional products to make cooking simple and satisfying. Discover other countertop appliances and cookware from our current product lineup to complement your kitchen.

Stay connected for more recipe ideas and monthly giveaways!



www.AromaTestKitchen.com



[/AromaHousewares](https://www.instagram.com/AromaHousewares)



Published By:

Aroma Housewares Co. | 6469 Flanders Drive, San Diego, CA 92121, U.S.A.

1-800-276-6286 | www.AromaCo.com

©2019 Aroma Housewares Company | All rights reserved.



IMPORTANT SAFEGUARDS

When using electrical appliances, basic safety precautions should always be followed, including the following:

1. **Important: Read all instructions carefully before first use.**
2. Do not touch hot surfaces. Use handles or knobs. Metal surfaces become extremely hot.
3. To protect against fire, electric shock and injury to persons, do not immerse cord, plug or power base in water or any other liquid. See instructions for cleaning.
4. Close supervision is necessary when the appliance is used by or near children.
5. Always unplug the appliance from the outlet when not in use and before cleaning. Allow the kettle to cool completely before putting on or taking off parts, and before cleaning the appliance.
6. Do not operate appliance with a damaged cord or plug, or after appliance malfunctions or has been damaged in any manner. Contact Aroma® customer service for examination, repair or electrical/mechanical adjustment.
7. The use of accessory attachments not recommended by Aroma® Housewares may result in fire, electrical shock or personal injury.
8. Do not use outdoors.
9. Do not let cord hang over the edge of a table or counter or to touch hot surfaces.
10. Do not place kettle on or near a hot gas or electric burner, or in a heated oven.
11. To disconnect, turn any control to the "OFF" position. Then remove the plug from the wall outlet. Never unplug by pulling the cord.
12. Do not use kettle for anything other than its intended use.
13. The power base must only be used with the provided kettle.
14. Only use the kettle to heat water. No other liquids should be placed inside the kettle.
15. Do not unscrew any screws on the kettle or power base or attempt to disassemble them in any way.
16. Do not move kettle during the heating process.
17. This appliance is for household use only.
18. Do not immerse the kettle or any of its parts in water.
19. Scalding may occur if the lid is removed during the boiling cycle.
20. **CAUTION:** If water exceeds the MAX line, the boiled water may spill out.
21. Use only on a level, dry and heat-resistant surface.
22. The electric kettle should be operated on a separate electrical circuit from other operating appliances. If the electrical circuit is overloaded with other appliances the electric kettle may not operate properly.
23. Do not open the kettle lid when in operation.

SAVE THESE INSTRUCTIONS



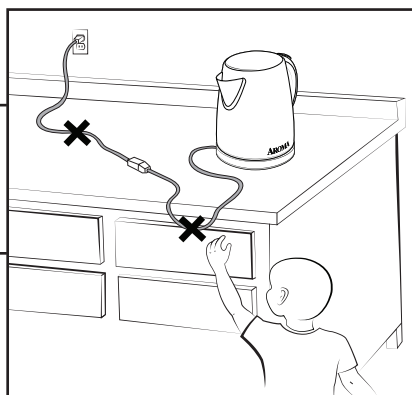
IMPORTANT SAFEGUARDS

Short Cord Instructions

1. A short power-supply cord is provided to reduce the risks resulting from becoming entangled in or tripping over a longer cord.
2. Longer extension cords are available and may be used if care is exercised in their use.
3. If a longer extension cord is used:
 - a.) The marked electrical rating of the extension cord should be at least as great as the electrical rating of the appliance.
 - b.) The longer cord should be arranged so that it will not drape over the counter top or tabletop where it can be pulled by children or tripped over unintentionally.

DO NOT DRAPE CORD!

**KEEP AWAY
FROM CHILDREN!**



Polarized Plug

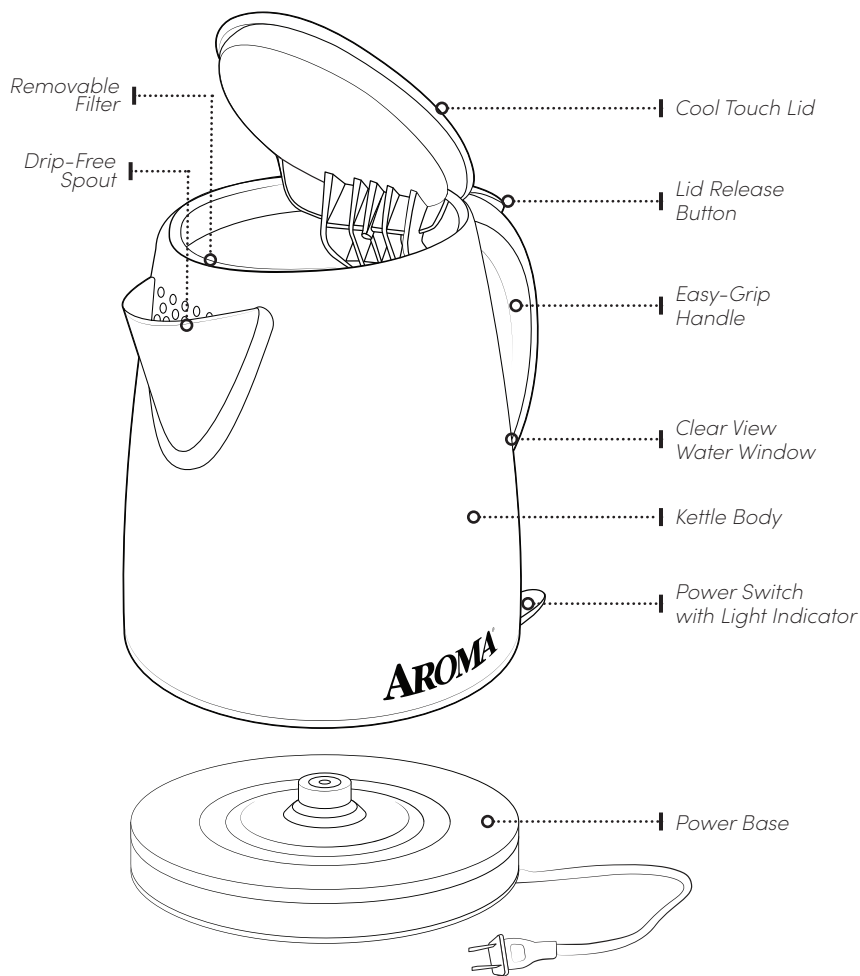
This appliance has a polarized plug (one blade is wider than the other); follow the instructions below:

To reduce the risk of electric shock, this plug is intended to fit into a polarized outlet only one way. If the plug does not fit fully into the outlet, reverse the plug. If it still does not fit, contact a qualified electrician. Do not attempt to modify the plug in any way.

If the supply cord is damaged, it must be replaced by the manufacturer, its service agent or a similarly qualified person in order to avoid a hazard.

THIS APPLIANCE IS FOR HOUSEHOLD USE ONLY.

Parts Identification



Controls

Power (⏻)

When switch is pressed, the boiling process begins.
When boil is reached, kettle automatically turns off.

BEFORE FIRST USE

Before using for the first time, it is recommended to clean the interior of the kettle thoroughly. Please follow the procedures below before using the kettle:

1. Read all instructions and important safeguards.
2. Remove all packing materials and make sure that the product has been received in good condition.
3. Take care to keep the electrical components on the exterior of the kettle dry, wipe out the interior of the kettle with a damp cloth. If your hand will not fit inside the kettle, swish warm, soapy water around in the interior of the kettle with the lid closed.
4. Rinse out the inside of the kettle thoroughly with water.
5. With a damp cloth, gently wipe off the exterior of the kettle. Do not wipe off electrical components as this may cause damage to the unit.
6. Dry all parts completely.
7. It is recommended to run your kettle through one boiling cycle before using it to consume beverages. Following the instructions in **BOILING WATER** on page 8, boil one kettle of water. When water has boiled, pour it out and rinse the inside of the kettle once more. The kettle is now ready for use.

.....

TO CLEAN

1. Wipe the exterior of the kettle with a damp cloth, taking care to avoid the electrical components.
2. Clean the interior of the kettle with a soft sponge and warm, soapy water. If your hand does not fit in the lid opening, swish warm, soapy water around inside the kettle with the lid closed.
3. Rinse any remaining soapy water from the kettle.
4. Drain.

.....

6.

Note:

- Do not use abrasive cleaners or scouring pads of any kind on the kettle or power base. This will cause damage to the finish and may create a risk of electrical shock.
- Any other servicing should be performed by Aroma® Housewares.



Caution:

The stainless steel portions of the kettle will become extremely hot during use and remain hot for sometime after. **Do not touch the stainless steel body or lid until the kettle has cooled completely.**

Always unplug the kettle and allow it to cool completely before cleaning.

Never attempt to disassemble the kettle or the power base.

Never immerse the kettle, power cord, plug or power base in water.

Always take care not to allow electrical components to come into contact with water.

Always unplug kettle prior to cleaning.

TROUBLESHOOTING

The kettle and indicator light do not work when the power button is pressed.

- Make sure the kettle is seated properly on the power base and that the base is connected to a functioning electrical outlet.
- If the kettle is heated with no water, the internal safety mechanism will automatically turn the kettle off. The power button will automatically return to the OFF position. The kettle will begin working again after the internal temperature drops to a safe level or when water is added and the power button reactivates.

The water is boiling, but the power button and indicator light do not turn off.

- The auto shut-off function will not operate properly if the lid is not completely closed. Allow kettle to cool, then check to see that the lid is properly locked into place.

The power button won't stay down and the kettle will not turn on.

- Make sure that the kettle is seated properly on the power base and that the base is connected to a functioning electrical outlet.
- Water or debris on the bottom of the kettle or on the power base may interfere with the functioning of the kettle. Be sure that the base of the kettle and the power base are dry and free of debris.

There are mineral deposits on the interior of the kettle.

- A certain amount of scale build-up is normal after long periods of use and is caused by minerals contained in hard water. The best way to prevent mineral deposits is to always use distilled water in the kettle.
 - To remove deposits, try filling the kettle halfway with water and adding a few slices of lemon, then boil. If this does not work, please see **MINERAL DEPOSITS** page 9.
-

Note:

If the problem persists, please contact our customer service department toll-free at **(800) 276-6286** or through email at **CustomerService@AromaCo.com**.

BOILING WATER

1. Place power base on a sturdy, level and dry surface.
2. Open the kettle lid by pressing the lid release button. Fill with water. Water must be filled between 0.5L and 1.0L **MAX**.
3. Close the lid, ensuring it locks into place.
4. Place the kettle onto the power base.
5. Plug the power cord into an available 120V AC wall outlet.
6. Press down on the **Power** (⏻) button. The button will illuminate and the kettle will begin heating the water.
7. Once the water reaches a boil, the power button will rise and the kettle will automatically shut off.
8. Using the cool-touch handle, lift the kettle off the power base to serve. Do not touch the stainless steel body, as it will be hot.
9. When finished serving, pour out any remaining water and unplug the power cord.



Caution:

The stainless steel portions of the kettle will become extremely hot during use and remain hot for sometime after. **Do not touch the stainless steel body or lid until the kettle has cooled completely.**

Never fill kettle with any liquid other than water.

Never open the lid while water is boiling.

Note:

If the kettle is heated with no water, the internal safety mechanism will automatically turn the kettle off. The power button will automatically return to the OFF position. The kettle will begin working again after the internal temperature drops to a safe level or when water is added and the power button reactivates.

MINERAL DEPOSITS

Hard water can leave mineral deposits that create scale build-up on the interior of the kettle. If mineral deposits occur, follow these steps:

1. Fill the kettle halfway with water.
2. Following the instructions in **BOILING WATER** on page 8, bring the water to a boil.
3. Add one cup of white vinegar to the water in the kettle.
4. Allow the mixture to soak overnight.
5. Empty the mixture and rinse out the kettle.
6. Refill the kettle with water only. Bring it to a boil and empty again. Repeat as needed.

.....

Helpful Hints:

Using distilled water will help to prevent the buildup of mineral deposits.

RECIPES

Honey Mint Tea

4 tbsp	honey
1-2	fresh mint leaves
1	lemon wedge
4 cups	hot water

Boil 4 cups of water with your electric water kettle. Add 1 tablespoon of honey to 4 heat-safe mugs. Muddle together mint and lemon juice and evenly distribute between the mugs. Pour hot water over ingredient mix.

SERVES 4.
.....

Hot Peanut Butter Cup

4 packets*	hot cocoa mix
8 tsp	peanut butter
3 cups	hot water

* 1 cocoa mix packet is
approximately 1.5 tablespoons.

Boil 3 cups of water with your electric water kettle. Allow to cool slightly. Add cocoa mix packet* of your choice and $\frac{3}{4}$ cup of hot water to 4 heat-safe mugs. Mix in 2 teaspoons of peanut butter to each mug. Allow to cool and enjoy!

SERVES 4.
.....

LIMITED WARRANTY

Aroma Housewares Company warrants its products against defects in material and workmanship for one year from provable date of purchase in the United States.

Within this warranty period, Aroma Housewares Company will repair or replace, at its discretion, defective parts at no charge, provided the product is returned, freight prepaid with proof of purchase and U.S. \$15.00 for shipping and handling charges payable to Aroma Housewares Company. Before returning an item, please call the toll free number below for a return authorization number. Allow 2-4 weeks for return shipping.

This warranty does not apply if the warranty period expired; the products has been modified by any unauthorized service center or personnel; the defect was subject to abuse, improper use not conforming to product manual instructions, or environment conditions more severe than those specified in the manual and specification, neglect of the owner or improper installation; the defect was subject to Force Majeure such as flood, lightning, earthquake, other natural calamities, war, vandalism, theft, brownouts or sags (damage due to low voltage disturbances).

This warranty gives you specific legal rights, which may vary from state to state, and does not cover areas outside the United States.

.....

SERVICE & SUPPORT

In the event of a warranty claim, or if service is required for this product, please contact Aroma® customer service toll-free at:

1-800-276-6286

M-F, 8:30am-4:30pm, Pacific Time

Or we can be reached online at:

CustomerService@AromaCo.com

For your records, we recommend stapling your sales receipt to this page along with a written record of the following:

· Date of Purchase:

· Place of Purchase:

.....

Aroma Housewares Company
6469 Flanders Drive, San Diego, CA 92121, U.S.A.
1-800-276-6286 | www.AromaCo.com
M-F, 8:30am – 4:30pm, Pacific Time

Note:

- Proof of purchase is required for all warranty claims.



To Enhance and Enrich Lives.



www.AromaCo.com