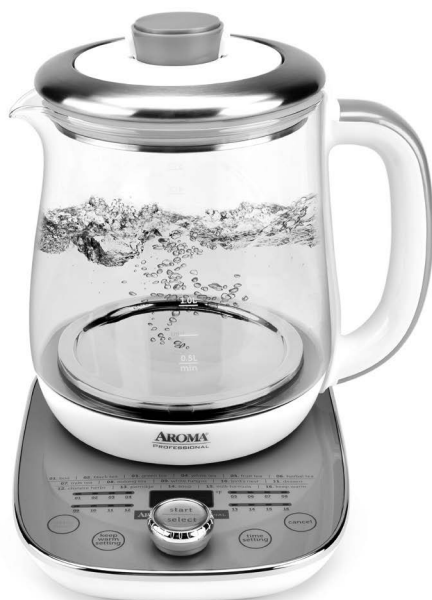


AROMA®
PROFESSIONAL



instruction manual

AWK-701

Electric Tea Maker

Questions or concerns about your Aroma product?
www.AromaCo.com/Support
1-800-276-6286

DISCOVER
more of our
products!



Multicookers/
Rice Cookers



Pot-Style
Rice Cookers



Water Kettles



Indoor Grills



AROMA®

To Enhance and Enrich Lives.

Here at Aroma we strive to make a difference—to design and distribute products that enhance and enrich people's lives.

Aroma offers an array of exceptional products to make cooking simple and satisfying. Discover other countertop appliances and cookware from our current product lineup to complement your kitchen.

REGISTER YOUR PRODUCT



SCAN TO REGISTER
or visit [AromaCo.com/
registration](http://AromaCo.com/registration)

Activate your warranty.
Registration is quick and easy.

Be notified of:

- new product releases
- new test kitchen recipes
- sales and promotions
- ...and more!



/AromaHousewares



IMPORTANT SAFEGUARDS

When using electrical appliances basic safety precautions should always be followed, including the following:

1. **Important: Read all instructions carefully before first use.**
2. Do not touch hot surfaces. Use handles or knobs. Glass surfaces become extremely hot.
3. To protect against fire, electrical shock and injury to persons, do not immerse cord, plug or kettle in water or any other liquid. See instructions for cleaning.
4. Close supervision is necessary when the appliance is used by or near children.
5. Always unplug the appliance from the outlet when not in use and before cleaning. Allow the kettle to cool completely before putting on or taking off parts, and before cleaning the appliance.
6. Do not operate the appliance with a damaged cord or plug, or after appliance malfunctions or has been damaged in any manner. Contact Aroma® customer service for examination, repair or electrical/mechanical adjustment.
7. The use of accessory attachments not recommended by Aroma® Housewares may result in fire, electrical shock or injury.
8. Do not use outdoors.
9. Do not let the cord hang over the edge of a table or counter or touch hot surfaces.
10. Do not place the kettle on or near a hot gas or electric burner or in a heated oven.
11. To turn off the unit, press **Cancel** if there is a function currently running then press the control dial. Once the unit has powered off, safely remove the plug from the wall outlet.
12. Do not use the kettle for anything other than its intended use.
13. The power base must only be used with the provided kettle.
14. Do not unscrew any screws on the kettle or power base or attempt to disassemble them in any way.
15. Do not move the kettle during the heating process.
16. This appliance is for household use only.
17. **CAUTION:** To prevent overflow while boiling, do not allow liquids to exceed the MAX line.
18. Use only on a level, dry and heat-resistant surface.
19. Always unplug from the plug gripping area. Never pull on the cord.
20. The electric kettle should be operated on a separate electrical circuit from other operating appliances. If the electrical circuit is overloaded with other appliances the electric kettle may not operate properly.
21. Use only with a 120V AC power outlet.
22. Intended for countertop use only.
23. **WARNING:** Do not use the appliance if the kettle or power base is cracked.
24. **WARNING:** Do not remove the lid while liquids are boiling.
25. **CAUTION:** Position the lid so that escaped steam is directed away from the handle.

Published By:

Aroma Housewares Co. | 6469 Flanders Drive, San Diego, CA 92121, U.S.A.

1-800-276-6286 | www.AromaCo.com

©2021 Aroma Housewares Company | All rights reserved.

SAVE THESE INSTRUCTIONS



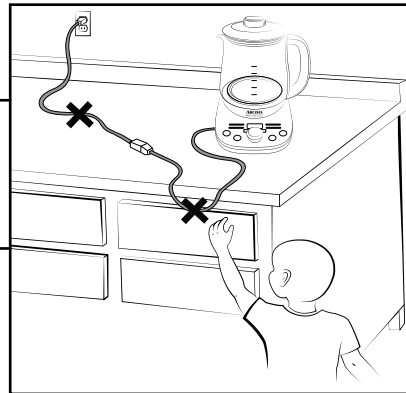
IMPORTANT SAFEGUARDS

Short Cord Instructions

1. A short power-supply cord is provided to reduce the risks resulting from becoming entangled in or tripping over a longer cord.
2. Longer extension cords are available and may be used if care is exercised in their use.
3. If a longer extension cord is used:
 - a.) The marked electrical rating of the extension cord should be at least as great as the electrical rating of the appliance.
 - b.) The longer cord should be arranged so that it will not drape over the countertop or tabletop where it can be pulled by children or tripped over unintentionally.
 - c.) The extension cord should be a grounding-type 3-wire cord.

DO NOT DRAPE CORD!

KEEP AWAY FROM CHILDREN!



Grounding Instructions

This appliance must be grounded while in use to protect the operator from electrical shock. The appliance is equipped with a 3-conductor cord and a 3-prong grounding-type plug to fit the proper grounding-type receptacle. The appliance has a plug that looks like **Figure (A)**.

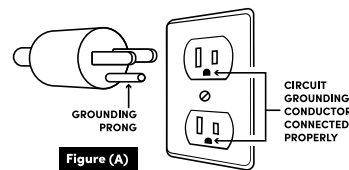
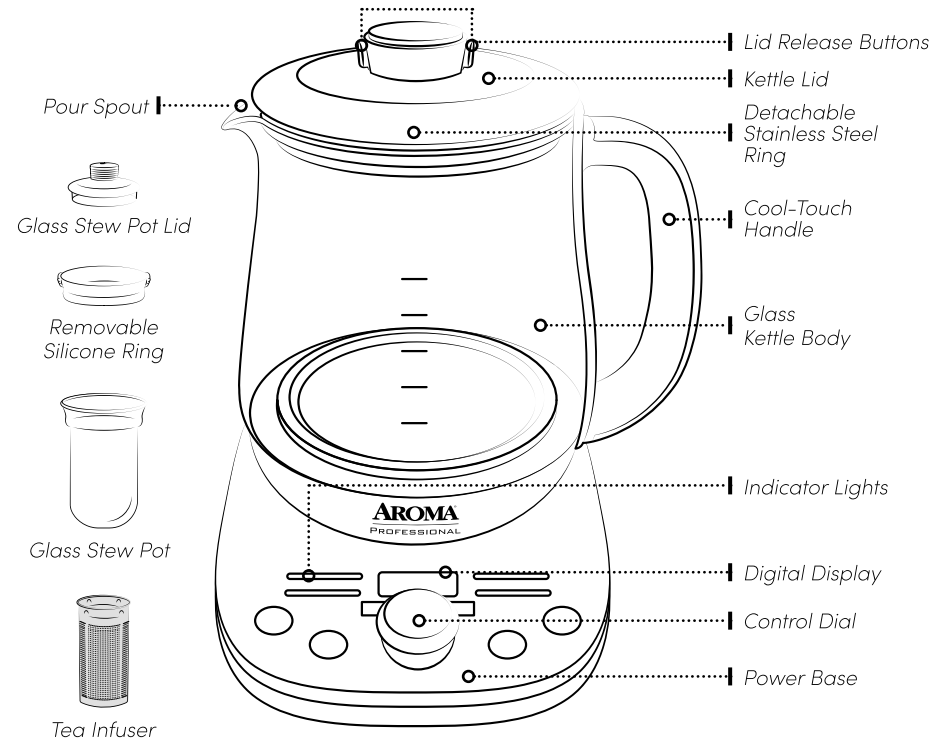


Figure (A)

THIS APPLIANCE IS FOR HOUSEHOLD USE ONLY.

Parts Identification



Controls/Functions

Control Dial (Start/Select)

Powers the unit on/off. Turn the control dial until the desired function is selected then press the control dial to begin heating.

Delay Timer

Boils water right when it's needed with preparation up to 9½ hours in advance. The amount of delay time can be adjusted using the control dial.

Keep Warm Setting

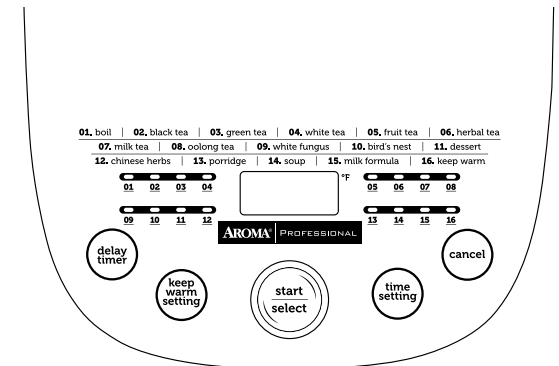
Allows you to adjust the temperature for **Keep Warm** mode between 113°F and 193°F.

Time Setting

Allows you to adjust the heating time for all functions except **01. Boil** and **15. Milk Formula** by 1, 5, 30, or 60 minute increments depending on the selected function.

Cancel

Cancels a current function.



BEFORE FIRST USE

Before using for the first time, it is recommended to clean the interior of the kettle thoroughly. Please follow the procedures below before using the kettle:

1. **Read all instructions and important safeguards.**
2. Remove all packaging materials and check that all items have been received in good condition.
3. Tear up all plastic bags and dispose of them properly as they can pose a risk to children.
4. Clean the interior of the kettle with a soft sponge and warm, soapy water. If your hand will not fit inside the kettle, swish warm, soapy water around in the interior of the kettle with the kettle lid on. Take care to keep the electrical components on the exterior of the kettle dry.
5. With a damp cloth, gently wipe the exterior of the kettle. Hand wash all parts (glass stew pot, glass stew pot lid, removable silicone ring, tea infuser). Do not wipe electrical components as this may cause damage to the unit.
6. Dry all parts thoroughly.
7. Following the instructions in "Boiling Water" on page 10, boil 6 cups of water. Once the water has boiled, pour it out then rinse the inside of the kettle once more with warm water. The kettle is now ready for use.

TO CLEAN

1. Wipe the exterior of the kettle with a damp cloth, taking care to avoid the electrical components.
2. Clean the interior of the kettle with a soft sponge and warm, soapy water. If your hand will not fit inside the kettle, swish warm, soapy water around in the interior of the kettle with the kettle lid on.
3. Rinse and drain any remaining soapy water from the kettle.
4. If the glass stew pot, glass stew pot lid, removable silicone ring, or tea infuser were used, hand wash using warm, soapy water then dry thoroughly.
5. Dry the interior and exterior of the kettle thoroughly before placing it back on the power base.



Caution:

Always unplug the kettle and allow it to cool completely before cleaning.

Never attempt to disassemble the kettle or the power base.

Never immerse the kettle, power cord, plug or power base in water.

Always take care not to allow electrical components to come into contact with water.

Do not use abrasive cleaners or scouring pads of any kind on the kettle or power base. This will cause damage to the finish and may create a risk of electrical shock.

Never wash the glass stew pot, glass stew pot lid, removable silicone ring, tea infuser, kettle or kettle lid in the dishwasher.

Note:

Any other servicing should be performed by Aroma® Housewares.

TROUBLESHOOTING

The kettle and indicator lights do not work when powered on.

- Make sure the kettle is seated properly on the power base and that the power base is connected to a functioning electrical outlet.
- If there is no water or liquid in the kettle, the internal safety mechanism will automatically turn the kettle off. The kettle will begin working again after the kettle is removed from and returned to the power base and the internal temperature drops to a safe level.

The water is boiling, but the power switch and indicator lights do not turn off.

- The automatic shut-off feature will not operate properly if the kettle lid is not completely closed. Allow the kettle to cool, then check to see that the kettle lid is properly locked into place.

There are mineral deposits or white residue on the interior of the kettle.

- A certain amount of scale build-up is normal after use and is caused by minerals contained in hard water.
- To remove deposits, refer to "Mineral Deposits" on pages 14-15.

Error Code Chart

If an error shows on the digital display, the following chart will help explain the next course of action.

Code	Description	Corrective Action
000	Kettle missing from power base or the temperature sensor has an open circuit	Place the kettle back onto the power base and restart the selected function. If the problem persists, contact customer service at 1-800-276-6286.
E00	Dry boil protection	Power off the unit, fill the kettle with water and restart the selected function.
E01	Temperature sensor has short circuited or overheated	Turn off the kettle. Allow to cool for 5 minutes then restart. If the problem persists, contact customer service at 1-800-276-6286.

Note:

If the problem persists, please contact our customer service department at **1-800-276-6286** or by email at **CustomerService@AromaCo.com**.

FUNCTIONS

01. Boil

Brings contents to boiling temperature (212°F) quickly and efficiently.

02. Black Tea

Boils to 212°F making it ideal for loose leaf black teas. Simply place the tea leaves inside the tea infuser and brew.

03. Green Tea

Heats to 170°F making it ideal for loose leaf green teas. Simply place the tea leaves inside the tea infuser and brew.

04. White Tea

Heats to 160°F making it ideal for loose leaf white teas. Simply place the tea leaves inside the tea infuser and brew.

05. Fruit Tea

Place dried or fresh fruit into the tea infuser to infuse water with your favorite delicious fruity flavors.

06. Herbal Tea

Fill the kettle with any herbs of your choice and allow them to steep in hot water until brewed to perfection.

07. Milk Tea

Allows you to brew milk tea by placing your preferred tea leaves inside the tea infuser and adding milk into the kettle.

08. Oolong Tea

Heats to 185°F making it ideal for loose leaf oolong teas. Simply place the tea leaves inside the tea infuser and brew.

09. White Fungus

Add white fungus into the glass stew pot to soften them or to directly cook them into healthy dessert soups.

10. Bird's Nest

Using the glass stew pot, steam bird's nests to provide you with skin-beautifying collagen teas and soups.

11. Dessert

Prepares traditional Chinese dessert soups such as sweet rice soup, red bean soup and more.

12. Chinese Herbs

Steeps and stews Chinese medicinal herbs at optimal temperatures for up to 1½ hours.

Note:

Refer to the "Function Times & Temperatures Table" on page 18 for each function's temperature and the adjustable time ranges available for each function.

FUNCTIONS (CONT.)

13. Porridge

Cooks perfectly tender rice porridge when rice and water are added to the kettle.

14. Soup

Can prepare a variety of soups by adding ingredients into the glass stew pot and allowing them to stew or by adding ingredients directly into the kettle.

15. Milk Formula

Add water to the kettle to bring it to a safe, warm temperature for use in milk formula.

16. Keep Warm

Will keep contents warm at a default temperature of 143°F and default time of 1 hour. To customize, adjust the temperature from 113°F-193°F using **Keep Warm Setting** and adjust the time from 1-8 hours using **Time Setting**.

SELECTING A FUNCTION

1. Place the power base on a sturdy, level and dry surface.
2. Press the lid release buttons and remove the kettle lid. Fill with the desired amount of water and/or other liquids. Liquid must be filled between the MIN and MAX levels.
3. While pressing the lid release buttons, place the kettle lid on securely then carefully place the kettle onto the power base.
4. Plug the power cord into an available 120V AC wall outlet.
5. Press the control dial to turn on the unit. The unit will beep to signify it has been powered on.
6. Turn the control dial until the desired function is selected. With every turn of the control dial, the unit will beep and the selected function's indicator light will illuminate.
7. Once selected, press the control dial to initiate the function. The unit will beep as the selected function begins its heating cycle.
8. When finished serving, press **Cancel** then press the control dial to power off the unit. Once the unit is off, safely unplug the power cord from the wall outlet.



Caution:

The glass portions of the kettle will become extremely hot during use and remain hot for sometime after. **Do not touch the glass body or kettle lid until the kettle has cooled completely.**

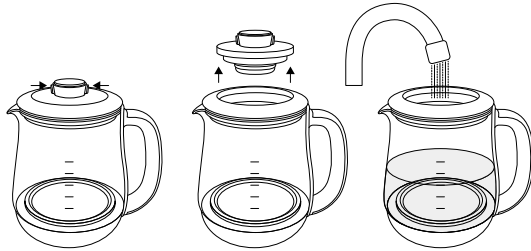
Never open the kettle lid while water and/or other liquids are boiling.

Note:

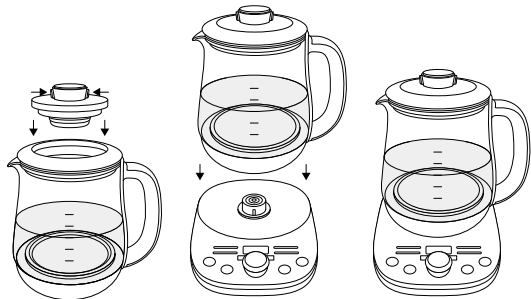
- To remove only the kettle lid, press the lid release buttons while removing.
- If attempting to remove the kettle lid without pressing the lid release buttons, both the kettle lid and detachable stainless steel ring will be removed together. To put the stainless steel ring back on, align the silicone cut-out with the handle.
- All functions EXCEPT **01. Boil** will automatically switch to **Keep Warm** mode after their heating cycle has completed. The default **Keep Warm** mode will keep contents warm for 1 hour.

BOILING WATER

1. Place the power base on a sturdy, level and dry surface.
2. Press the lid release buttons and remove the kettle lid. Fill with the desired amount of water. Water must be filled between the MIN and MAX levels.



3. While pressing the lid release buttons, place the kettle lid on securely then carefully place the kettle onto the power base.



4. Plug the power cord into an available 120V AC wall outlet.
5. Press the control dial to turn on the unit. The unit will beep to signify it has been powered on.
6. Turn the control dial to select function **01. Boil**. The unit will beep and the **01. Boil** indicator light will illuminate.
7. Press the control dial once more to initiate the boil cycle. The unit will beep and begin to heat.
8. If automatic **Keep Warm** mode is desired, press **Keep Warm Setting** after initiating **01. Boil**. To set a custom **Keep Warm** temperature, press **Keep Warm Setting** to increase the temperature by ten degree increments until the desired temperature is flashing on the digital display. After the contents reach a boil, the kettle will enter **Keep Warm** mode automatically.



Caution:

The glass portions of the kettle will become extremely hot during use and remain hot for sometime after. **Do not touch the glass body or kettle lid until the kettle has cooled completely.**

Never open the kettle lid while water is boiling.

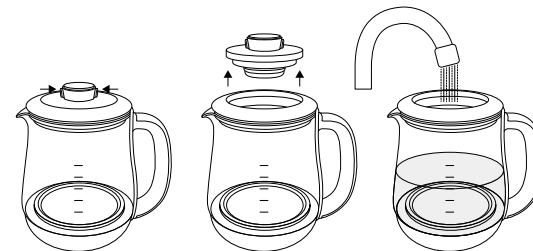
BOILING WATER (CONT.)

9. If **Keep Warm** mode was not selected, the unit will beep and automatically turn off when boiling temperature is reached.
10. When finished serving, press **Cancel** then press the control dial to power off the unit. Once the unit is off, safely unplug the power cord from the wall outlet.

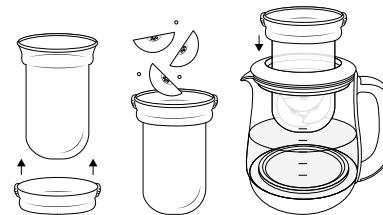
USING THE GLASS STEW POT

The provided glass stew pot can be used to stew and steep ingredients for soups, bird's nests and more. To use, follow the instructions below:

1. Place the power base on a sturdy, level and dry surface.
2. Press the lid release buttons to remove the kettle lid. Fill the kettle with water, other liquids and/or any other desired ingredients. Liquid must be filled to around the 1.0L level.



3. Slide the removable silicone ring onto the glass stew pot starting from the bottom to the top. Add desired ingredients into the glass stew pot. Insert the assembled glass stew pot and removable silicone ring.



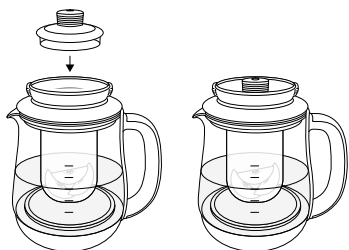
Caution:

Do not fill the kettle with more than 1.0L of liquid while using the glass stew pot to avoid and prevent overflow while boiling.

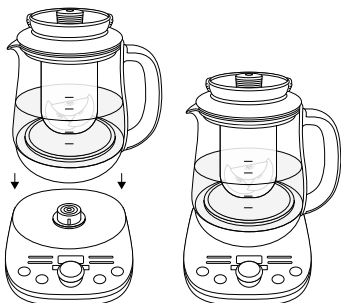
Never wash the glass stew pot, glass stew pot lid, removable silicone ring, tea infuser, kettle or kettle lid in the dishwasher.

USING THE GLASS STEW POT (CONT.)

4. Always use the glass stew pot lid when using the glass stew pot. Place the glass stew pot lid inside the middle of the removable silicone ring. The water level will rise slightly above the 1.25L line.



5. Carefully place the kettle onto the power base.



6. Plug the power cord into an available 120V AC wall outlet.
7. Press the control dial to turn on the unit. The unit will beep to signify it has been powered on.
8. Turn the control dial until the desired function is selected. With every turn of the control dial, the unit will beep and the selected function's indicator light will illuminate.
9. Once selected, press the control dial to initiate the function. The unit will beep as the selected function begins its heating cycle.
10. When finished, press **Cancel** then press the control dial to power off the unit. Using heat-resistant gloves or oven mitts, carefully remove the glass stew pot with the removable silicone ring and the glass stew pot lid still intact.
11. Once the unit is off, safely unplug the power cord from the wall outlet.



Caution:

The glass portions of the kettle will become extremely hot during use and remain hot for sometime after. **Do not touch the glass body or kettle lid until the kettle has cooled completely.**

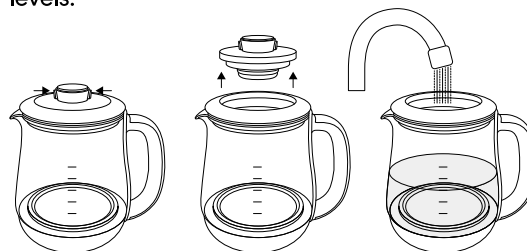
Never open the kettle lid while water is boiling.

Use heat-resistant gloves or oven mitts when removing the entire glass stew pot.

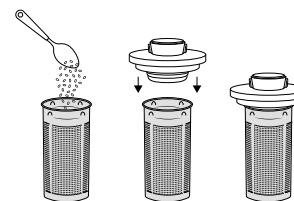
USING THE TEA INFUSER

The provided tea infuser can be used to easily steep loose leaf teas and other smaller ingredients to prepare a variety of different delicious teas. To use, follow the instructions below:

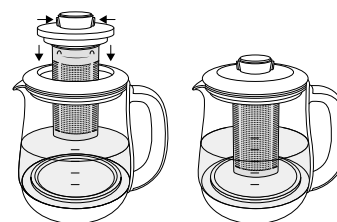
1. Place the power base on a sturdy, level and dry surface.
2. Press the lid release buttons and remove the kettle lid. Fill with the desired amount of water. Water must be filled between the MIN and MAX levels.



3. Add desired ingredients inside the tea infuser. Place the kettle lid on top of the tea infuser and press to secure.



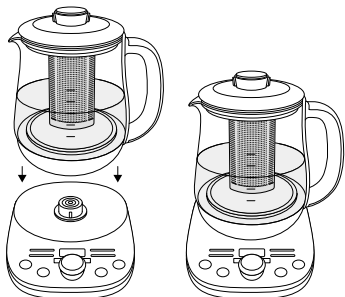
4. While pressing the lid release buttons, place the tea infuser with the kettle lid attached into the middle of the detachable stainless steel ring.



continued on next page>>

USING THE TEA INFUSER (CONT.)

5. Carefully place the kettle onto the power base.



6. Plug the power cord into an available 120V AC wall outlet.
7. Press the control dial to turn on the unit. The unit will beep to signify it has been powered on.
8. Turn the control dial until the desired function is selected. With every turn of the control dial, the unit will beep and the selected function's indicator light will illuminate.
9. When finished, press **Cancel** then press the control dial to power off the unit. Press the lid release buttons to remove the entire tea infuser with the kettle lid still on. Use heat-resistant gloves or oven mitts while removing to avoid injury.
10. Once the unit is off, safely unplug the power cord from the wall outlet.
.....

MINERAL DEPOSITS

Regular use of the kettle can leave behind mineral deposits or cause white residue and scale build-up on the interior of the kettle. This residue is normal and will not negatively affect you or the unit but can impact the quality of prepared meals/drinks over time if not cleaned properly. Follow these steps to remove deposits and residue:

1. Fill the kettle with 4 cups of water and 3 tablespoons of baking soda **OR** 1 cup of white vinegar **OR** ½ cup of lemon juice.
2. Bring contents to a boil by following the instructions in "Boiling Water" on page 10.



Caution:

The glass portions of the kettle will become extremely hot during use and remain hot for sometime after. **Do not touch the glass body or kettle lid until the kettle has cooled completely.**

Never open the kettle lid while liquids are boiling.

Use heat-resistant gloves or oven mitts when removing the tea infuser.

Helpful Hints:

- Using distilled water will help to prevent the buildup of mineral deposits.
- It is recommended to deep clean the kettle at least once a month.

MINERAL DEPOSITS (CONT.)

3. Allow the mixture to soak in the kettle overnight.
4. Empty contents and rinse out the kettle thoroughly with warm, soapy water.
5. Fill the kettle with 6 cups of water and bring to a boil. Once boiled, empty the kettle and dry thoroughly.
6. Repeat as needed.
.....

DELAY TIMER

1. Place the power base on a sturdy, level and dry surface.
2. Press the lid release buttons to remove the kettle lid. Fill with the desired amount of water and/or ingredients. Liquid must be filled between the MIN and MAX levels.
3. While pressing the lid release buttons, place the kettle lid on securely then carefully place the kettle onto the power base.
4. Plug the power cord into an available 120V AC wall outlet.
5. Press the control dial to turn on the unit. The unit will beep to signify it has been powered on.
6. Turn the control dial until the desired function is selected. With every turn of the control dial, the unit will beep and the selected function's indicator light will illuminate. The functions available for the delay timer are **01. Boil, 06. Herbal Tea, 09. White Fungus, 10. Bird's Nest, 11. Dessert, 13. Porridge** and **14. Soup**.
7. Press **Delay Timer**.
8. Adjust the desired delay time by turning the control dial. Turn the control dial clockwise to increase and counterclockwise to decrease. The time will increase or decrease by 30 minute increments and can be delayed up to 9½ hours.
9. Press the control dial to begin the delay timer. Once the selected amount of delay time has elapsed, the unit will begin heating for the selected function.
10. When finished serving, press **Cancel** then press the control dial to power off the unit. Once the unit is off, safely unplug the power cord from the wall outlet.
.....

16. KEEP WARM

1. Place the power base on a sturdy, level and dry surface.
2. Press the lid release buttons to remove the kettle lid. Fill with the desired amount of liquid. Liquid must be filled between the MIN and MAX levels.
3. While pressing the lid release buttons, place the kettle lid on securely then carefully place the kettle onto the power base.
4. Plug the power cord into an available 120V AC wall outlet.
5. Press the control dial to turn on the unit. The unit will beep to signify it has been powered on.
6. Turn the control dial to select function **16. Keep Warm**. The unit will beep and the **16. Keep Warm** indicator light will illuminate.
7. Press **Keep Warm Setting** to adjust the temperature from 113°F to 193°F. Each press will increase the temperature by 10 degree increments.
8. Press **Time Setting** to adjust the duration of **Keep Warm** mode from 1 to 8 hours. Each press will increase the time by 1 hour increments.
9. Press the control dial to begin heating to the input temperature or the default temperature. The kettle will be kept at this temperature until the input time or default time has expired.
10. When finished serving, press **Cancel** then press the control dial to power off the unit. Once the unit is off, safely unplug the power cord from the wall outlet.
.....

CUSTOM AUTOMATIC KEEP WARM

To set a custom Keep Warm temperature to be implemented after a selected function's cycle has completed, follow these steps:

1. Press **Keep Warm Setting** after selecting the desired function.
2. To set a custom **Keep Warm** temperature, press **Keep Warm Setting** to increase the temperature by 10 degree increments until the desired temperature is flashing on the digital display.

Note:

- All functions EXCEPT **01. Boil** will automatically switch to **Keep Warm** mode after their heating cycle has completed. The default **Keep Warm** mode will keep contents warm for 1 hour.
- While serving in **Keep Warm** mode, if the kettle is not returned back to the power base within 10 minutes, **Keep Warm** will be canceled.
- The default time and temperature for the **16. Keep Warm** function is 1 hour and 143°F respectively.

CUSTOM AUTOMATIC KEEP WARM (CONT.)

3. Press the control dial to begin the function's heating cycle.
4. After the selected function's cycle has completed, the kettle will enter the custom **Keep Warm** mode and remain at the input temperature for 1 hour.
.....

TIME SETTING

1. Place the power base on a sturdy, level and dry surface.
2. Press the lid release buttons to remove the kettle lid. Fill with the desired amount of water and/or ingredients. Liquid must be filled between the MIN and MAX levels.
3. Place the kettle lid on securely then carefully place the kettle onto the power base.
4. Plug the power cord into an available 120V AC wall outlet.
5. Press the control dial to turn the unit on. The unit will beep to signify it has been powered on.
6. Turn the control dial until the desired function is selected. The **Time Setting** feature is available for all functions EXCEPT **01. Boil** and **15. Milk Formula**.
7. Press **Time Setting** to adjust heating time. Each press will increase the time by one minute increments.
8. Press the control dial to initiate the selected function. The kettle will heat for the amount of time that was set and switch to **Keep Warm** once the time has expired.
9. When finished serving, press **Cancel** then press the control dial to power off the unit. Once the unit is off, safely unplug the power cord from the wall outlet.
.....

Function Times & Temperatures Table

Function (use control dial to select)	Temperature	Time Setting Range (use Time Setting to adjust)	Delay Timer (use control dial to adjust)
01. Boil	212°F	--	30 Minutes - 9½ Hours
02. Black Tea	212°F	1 - 10 Minutes	--
03. Green Tea	170°F	1 - 10 Minutes	--
04. White Tea	160°F	1 - 10 Minutes	--
05. Fruit Tea	212°F	1 - 20 Minutes	--
06. Herbal Tea	212°F	5 Minutes - 2 Hours	30 Minutes - 9½ Hours
07. Milk Tea	200°F	1 - 10 Minutes	--
08. Oolong	185°F	1 - 10 Minutes	--
09. White Fungus	212°F	5 Minutes - 2 Hours	30 Minutes - 9½ Hours
10. Bird's Nest	212°F	5 Minutes - 1½ Hour	30 Minutes - 9½ Hours
11. Dessert	212°F	5 Minutes - 1½ Hour	30 Minutes - 9½ Hours
12. Chinese Herbs	212°F	5 Minutes - 1½ Hour	--
13. Porridge	212°F	5 Minutes - 1½ Hour	30 Minutes - 9½ Hours
14. Soup	212°F	5 Minutes - 1½ Hour	30 Minutes - 9½ Hours
15. Milk Formula	130°F	--	--
16. Keep Warm	113°F - 193°F	1-8 Hours	--

RECIPES

Chocolate Fondue

4 cups water
 3½ oz. semi-sweet chocolate, chopped into small pieces
 1½ oz. milk chocolate, chopped into small pieces
 ⅓ cup heavy whipping cream
 pinch salt
 -- strawberries, cookies, marshmallows, angel food cake or fruits of your choice, for dipping

Fill the kettle with 4 cups of water. Add semi-sweet chocolate, milk chocolate, heavy whipping cream, and salt into the glass stew pot then carefully place the glass stew pot inside the kettle by following the steps in "Using the Glass Stew Pot" on pages **11-12**. Select and initiate the **11. Dessert** function using the control dial and set the **Time Setting** to 20 minutes. Allow the chocolate to completely melt then continue to keep the chocolate warm on **Keep Warm** mode while serving.

SERVES 2-4.

Ginseng Herb Chicken Soup

½ oz. marjoram, rinsed
 ½ oz. cloves, rinsed
 ½ oz. basil, rinsed
 ½ oz. ginseng, rinsed
 1 celery stalk, chopped
 1 bay leaf
 4 chicken legs
 4 cups water
 1¾ cups water

Fill the kettle with 4 cups of water. Place the assorted herbs and 1¾ cups of water into the glass stew pot then then carefully place the stew pot inside the kettle by following the steps in "Using the Glass Stew Pot" on pages **11-12**. Let the ingredients soak for 40 minutes then add the chicken legs to the glass stew pot and replace the glass stew pot lid. Select and initiate the **12. Chinese Herbs** function using the control dial and set the **Time Setting** for 40 minutes. Once finished cooking, pour into heat-safe bowls to serve.

SERVES 2.

For additional recipes, visit us at
www.AromaCo.com

RECIPES

Red Bean Soup

4 oz.	dried red beans, rinsed and soaked overnight
2 tbsp.	rock sugar
2	dried orange peels
5 cups	water

Add dried red beans, orange peels, and water into the kettle then place the kettle lid on securely. Select **11. Dessert** and set the **Time Setting** for 1 hour and 20 minutes. Press the control dial to begin heating. Once finished boiling, stir in the rock sugar then pour into heat-safe bowls to serve.

SERVES 4.

Porridge

½ cup	rice
4 cups	water

Rinse the rice until the water runs clear. Add the rice and 4 cups of water to the kettle. Select **13. Porridge** and set the **Time Setting** for 40 minutes to 1½ hours, depending on how tender you prefer your porridge. Press the control dial to begin heating. Once finished cooking, pour into heat-safe bowls to serve.

SERVES 4.

Yogurt

2 cups	milk
2 tbsp.	yogurt
8 cups	water

Add 4 cups of water to the kettle. Pour milk into the glass stew pot then place the glass stew pot inside the kettle with the removable silicone ring attached. Select the **04. White Tea** function to sterilize the milk. Safely remove the glass stew pot and pour out the hot water inside the kettle then refill with 4 more cups of cold water. Place the glass stew pot back inside the kettle to cool the milk. Once the milk has cooled, stir in yogurt. Select **16. Keep Warm** and set the temperature to 113°F and the **Time Setting** for 6½ hours. Pour the yogurt into a bowl and refrigerate until completely cooled.

SERVES 2.

RECIPES

Ramen Noodles

1 can	chicken stock
2 cups	water
1 cup	spinach
1 pack	instant ramen noodles
1 cup	grilled chicken, chopped
1	egg, beaten
½ cup	warm water
--	salt

Pour the chicken stock and water into the kettle then place the kettle lid on securely. Select and initiate the **01. Boil** function using the control dial. While the kettle comes to a boil, mix together the beaten egg, warm water and salt in a large bowl. After the water has come to a boil, pour the egg mixture into the glass stew pot and carefully place the glass stew pot inside the kettle by following the steps in "Using the Glass Stew Pot" on pages 11-12. Select and initiate the **14. Soup** function using the control dial and set the **Time Setting** for 10 minutes. After 5 minutes has elapsed, add the ramen noodles, spinach and grilled chicken into the kettle. Allow the kettle to heat for the remainder of the time on the **14. Soup** function then serve in a heat-safe bowl.

SERVES 1.

Dried Snow Fungus, Lotus Seed & Red Date Soup

1	dried snow fungus, stem trimmed
¼ cup	dried lotus seeds, rinsed
¼ cup	dried red dates, seeded
5 cups	water
2 tbsp.	rock sugar

Soak the dried snow fungus in water for 20 minutes then tear apart into small pieces. Add water and all ingredients except the rock sugar into the kettle then place the kettle lid on securely. Select and initiate the **09. White Fungus** function using the control dial and set the **Time Setting** for 1 hour. Once finished boiling, stir in the rock sugar then pour into heat-safe bowls to serve.

SERVES 4.

RECIPES

Bird's Nest

1	dried bird's nest
8	small red dates, rinsed
2 tbsp.	rock sugar
1½ cups	water
4 cups	water

Soak the dried bird's nest in cold water for 4 hours, draining and refilling with fresh cold water after 2 hours of soaking. Drain the water then carefully pick out the feathers using tweezers. Fill the kettle with 4 cups of water. Place 1½ cups of water, the soaked bird's nest, and red dates into the glass stew pot then carefully place the glass stew pot inside the kettle by following the steps in "Using the Glass Stew Pot" on pages 11-12. Select and initiate the **10. Bird's Nest** function using the control dial and set the **Time Setting** for 40 minutes. After the kettle has reached a boil, carefully remove the glass stew pot and empty its contents into a bowl. Sprinkle rock sugar atop and serve.

SERVES 2.

Chicken Nagaimo Soup

2	chicken wings
1	chicken leg, cut into 3" pieces
1 cup	nagaimo, cut into 2" pieces
5	dried shiitake mushrooms, soaked and stemmed
7	red dates
1 in.	ginger, sliced
1 tbsp.	goji berries
2 tbsp.	rice wine
1 tbsp.	salt
5 cups	water

Add chicken, mushrooms, red dates, ginger, and water into the kettle then place the kettle lid on securely. Select and initiate the **14. Soup** function using the control dial and set the **Time Setting** for 37 minutes. Once 37 minutes has elapsed, add in goji berries, nagaimo, cooking wine, and salt and boil for an additional 3 minutes before serving.

SERVES 4.

For additional recipes, visit us at
www.AromaCo.com

LIMITED WARRANTY

Aroma Housewares Company warrants its products against defects in material and workmanship for two years from provable date of purchase in the United States.

Within this warranty period, Aroma Housewares Company will repair or replace, at its discretion, defective parts at no charge, provided the product is returned, freight prepaid with proof of purchase and U.S. \$20.00 for shipping and handling charges payable to Aroma Housewares Company. Before returning an item, please call the toll free number below for a return authorization number. Allow 2-4 weeks for return shipping.

This warranty does not apply if the warranty period expired; the product has been modified by any unauthorized service center or personnel; the defect was subject to abuse, improper use not conforming to product manual instructions, or environmental conditions more severe than those specified in the manual and specification, neglect of the owner or improper installation; the defect was subject to Force Majeure such as flood, lightning, earthquake, other natural calamities, war, vandalism, theft, brownouts or sags (damage due to low voltage disturbances).

This warranty gives you specific legal rights, which may vary from state to state, and does not cover areas outside the United States.

SERVICE & SUPPORT

In the event of a warranty claim, or if service is required for this product, please contact Aroma® customer service toll-free at:

1-800-276-6286

M-F, 8:30am-4:30pm, Pacific Time

Or we can be reached online at:

CustomerService@AromaCo.com



Activate your warranty.
Registration is quick and easy.

SCAN TO REGISTER
or visit **AromaCo.com/registration**

Note:

Proof of purchase is required for all warranty claims.



To Enhance and Enrich Lives.



www.AromaCo.com